

From: Dawn Rudolph
Sent: Friday, October 9, 2020 3:47 PM
To: Gerhard, Lori (ACL) <Lori.Gerhard@acl.hhs.gov>
Cc: John Tschida <jtschida@AUCD.ORG>
Subject: follow-up

Hi Lori, thanks again for yesterday's chat. It's helpful to hear about the exciting efforts underway that address barriers experienced by people with disabilities. I'm happy to follow up on a couple items we discussed.

Assistive technology

- If you want more detail or discussion about the big-picture ideas, Shea Tanis, Director for Policy and Advocacy at the Coleman Institute for Cognitive Disabilities at the University of Colorado would be happy to chat with you. Here is her [bio](#) and [contact](#).
- Also, I realized my prior email to you with all the AT ideas referenced an emergency response ppt slide deck which I forgot to attach; it's attached here – Shea's team created this emergency response desktop in less than two months and is rolling it out now as a means to bridge digital divide, isolation, and emergency prep and response for people with cognitive disabilities during the pandemic. Could easily be used for the aging community as well. It was developed in collaboration with the ACL-funded DD Council in Colorado.

Social Isolation

- UCEDDs who are doing work in this area (*outside of ADRC collaborations*) include these research projects:
 - Montana: [Loneliness and its relation to health in people with spinal cord injury](#)
 - Texas: [Use of social supports among young adults who experience disability](#)
- I really appreciated reading through the document you sent: **Vision for a Public-Private Initiative to Address Social Isolation Organized by a Coordinating Center**. A recommendation for who to consider inviting to join the coalition:
 - Shea Tanis (mentioned above) as her vision is equally big, and she can bring lots to the table for this. While she's not directly part of the UCEDD, she collaborates with many in the UCEDD network. Here is her [bio](#) and [contact](#).

Transportation

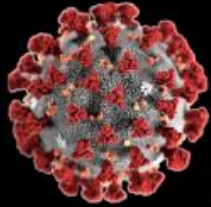
- Thanks for sending the ppt about the ACL-FTA partnership. I've shared it with UCEDDs who have notable transportation efforts. You know David Hoff at UMass well; here are other folks working on transportation:
 - Kentucky: [Kathy Sheppard-Jones](#) leads a transportation initiative seeks to develop resources and leverage opportunities to improve statewide transportation opportunities for people with disabilities across the state
 - Michigan: [Michael Bray](#) is working on a white paper outlining the needs, advantages and potential impact related to autonomous vehicle use by people with disabilities, aging and elderly individuals.
 - Montana: [Catherine Ipsen](#) conducts research and knowledge translation activities related to rural community participation, including exploring how different transportation options impact community living outcomes for rural people with disabilities and to inform rural transportation policy and development

- It does not appear there are efforts addressing mobility-on-demand, though I shared this priority with the folks above when I shared the ppt.

I hope this is helpful.
Have a great weekend,

Dawn Rudolph, MSED
Sr. Director, Technical Assistance & Network Engagement
Association of University Centers on Disabilities (AUCD)
1100 Wayne Ave., Suite 1000, Silver Spring, MD 20910
www.aucd.org 240-821-9387





Colorado Emergency Response Desktop



[LEARN MORE](#)



Hello!

Shea Tanis, Ph.D.
University of Colorado



Joelle Brouner
Colorado Developmental
Disabilities Council

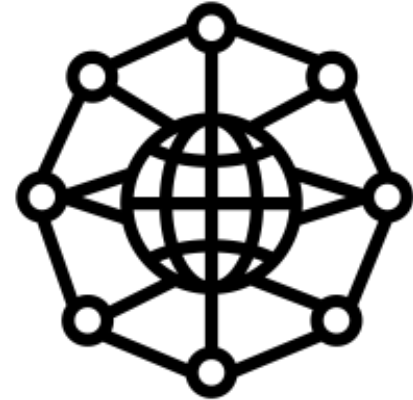
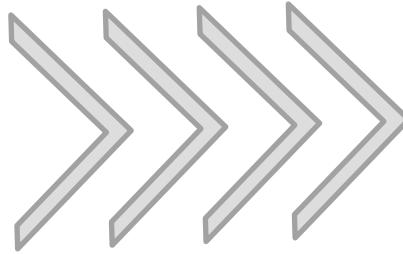


Dan Davies
Able Link Smart
Living Technologies





**Community is no longer a
physical location but an
experience that includes
digital world**





The ubiquity of technology is changing the world around us and how we must **interact, survive and **thrive** within that world**

What is the Colorado Emergency Response Desktop?



Cognitively accessible software that leverages evidence-based tools to address the immediate needs of social connection, accessible information, and advance digital skills for people with intellectual and developmental disabilities

Who Developed the Colorado Emergency Desktop?



Coleman Institute for Cognitive Disabilities
UNIVERSITY OF COLORADO

Boulder | Colorado Springs | Denver | Anschutz Medical Campus



What does it do?



ERDS Features

● Accessible email with pictures and audio



● Real-time feedback and interaction



● Tutorials for daily living tasks



● Cognitively accessible information on COVID



● Immediate access to state emergency response information



● Interactive activities for health and wellness



Demo...

Addressing the Barriers



Cognitively
Accessible –
Universally
Designed
Software and
Content



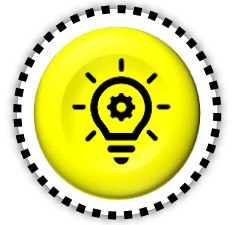
Training
Opportunities –
Weekly
Introduction and
Technical
Support –
Knowledge
Translation



Hardware
Deployment
through
Waiver
Services and
Grants –
Economic
Barriers



Free to 500
Users with
IDD Across
Colorado –
Economic
Barriers

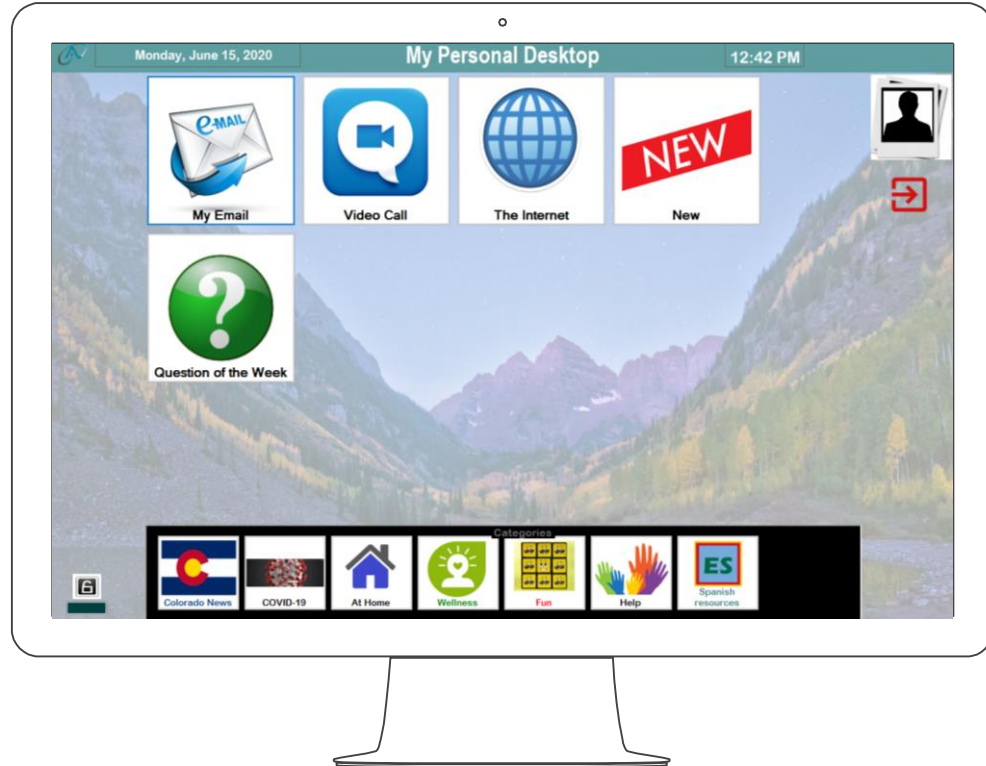


Builds Digital
Literacy
Skills



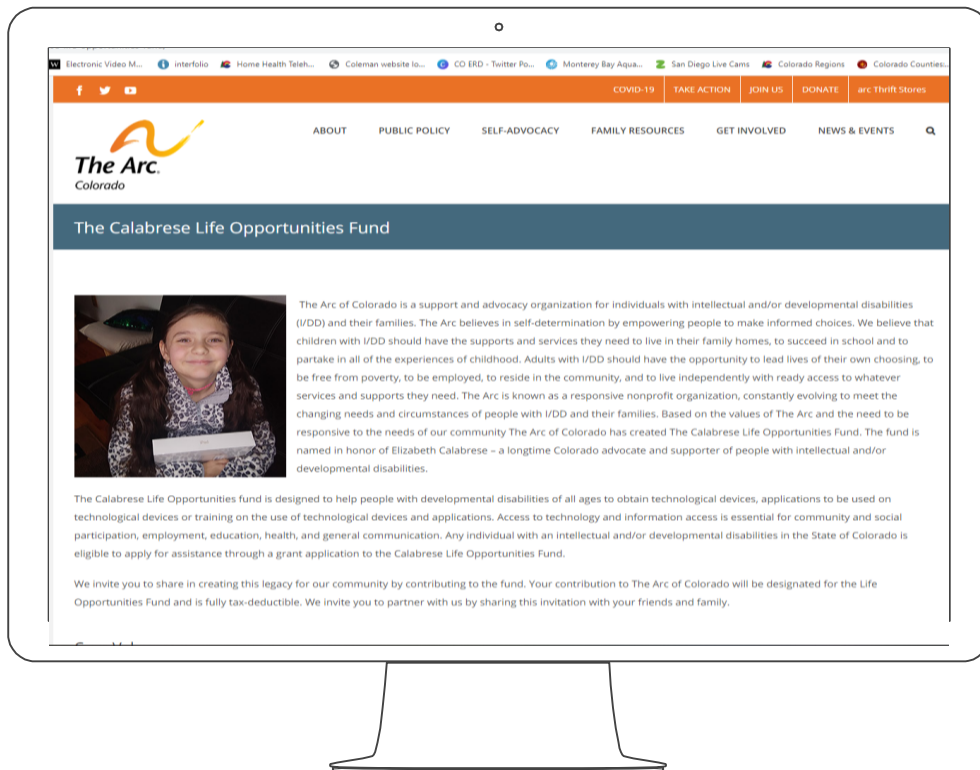
What do I need?

- ✔ Must have a desktop or laptop
- ✔ Must have Windows 10
- ✘ Does not work with a tablet
- ✘ Does not work with a smartphone



What if I do not have a computer?

The Arc of Colorado Calabrese Life Opportunities Fund

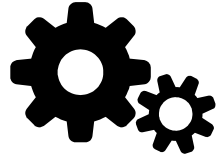




Who Can Participate?

- Person with an intellectual or developmental disability
- Person who has been displaced by COVID-19
- Person living on their own in their own home/apartment
- Person living at home with their family
- Member of Colorado Speaking for Ourselves

How Do I Get It?



1

**Complete the
Engagement
Form**

[colemaninstitute.org/covid-19/](https://www.colemaninstitute.org/covid-19/)

2

**Get Email
Download
from Colman
Institute**

3

**Download
Software on
Your Computer**

4

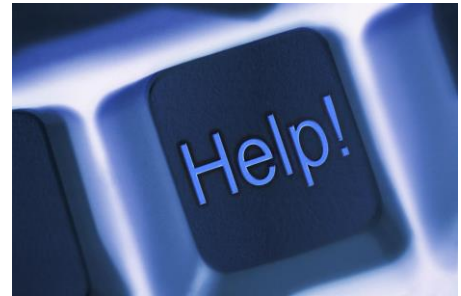
Get Started!!

<https://www.surveymonkey.com/r/6SKCQD8>



What If I Need Help?

- Monday Webinar at noon –introduction to the Emergency Response Desktop by the Coleman Institute
- Wednesday help from AbleLink for technical support





Expansion of the ERDS

States implementing and/or interested in adoption of the ERDS

- Maryland
- Tennessee
- District of Columbia
- Pennsylvania
- Arizona
- Oklahoma
- New Jersey

Outcomes-Based Investment



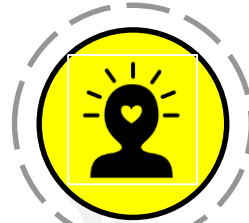
01

Investing in
Access to
Life-Saving
Information



02

Building 21st
Century Skills for
Future
Employment
Through Access



03

Investing in
Wellbeing



04

Investing in
Community
Integration
Providing
Content

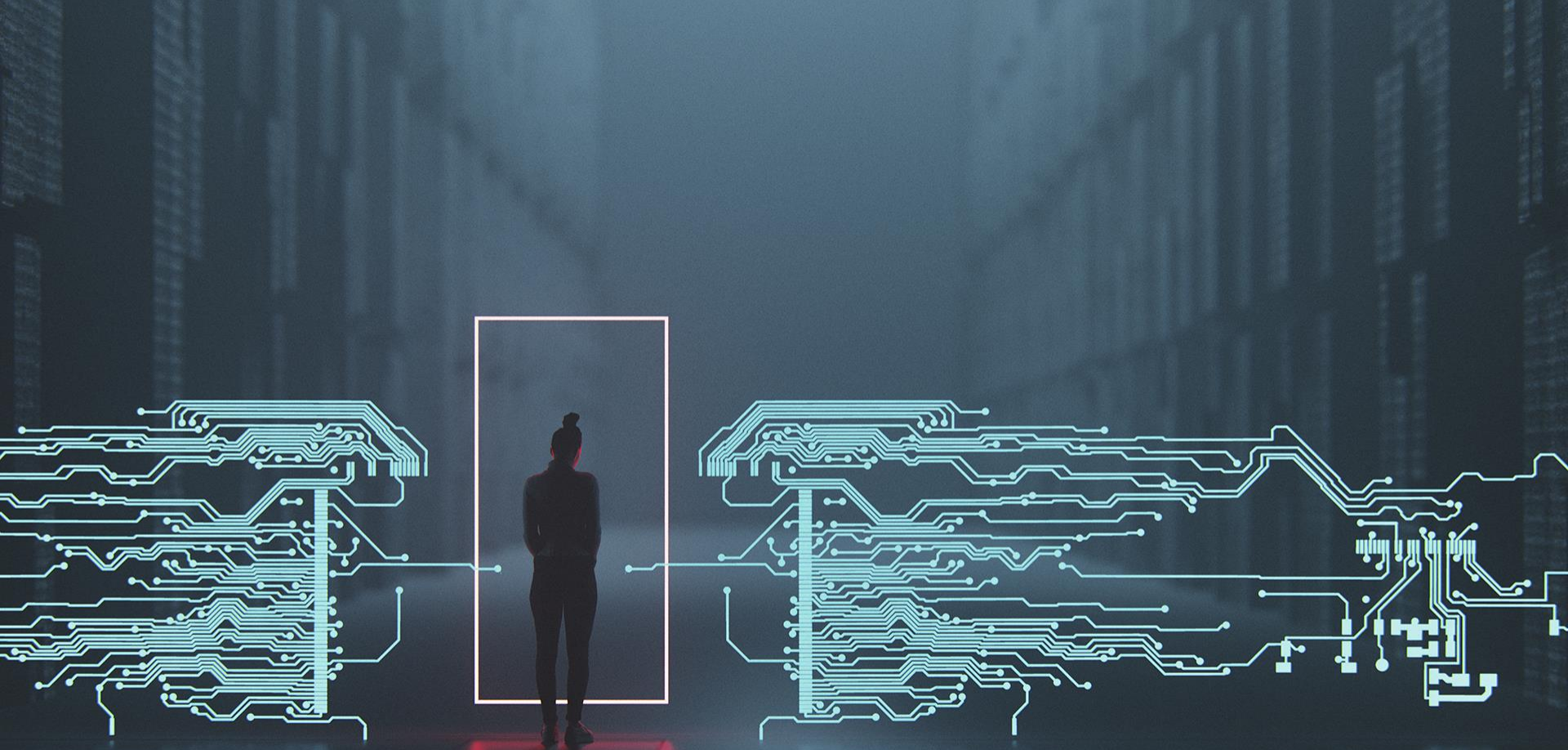


Image Source: <https://www.fieldservicenews.com/blog/barriers-slowing-digital-transformation>



Thanks!

Any questions?

You can find me at shea.tanis@cu.edu