

# 2018-19 MI-DDI Special Interest Forum Series

## Continuing the conversation: MI-DDI presents a Special Interest Forum exploring Community and Educational Inclusion



Michigan Developmental  
Disabilities Institute

### Date & Time:

[Forum #3: Inclusive  
Education &  
Communities](#)

**Thursday**

**January 17, 2019**

**5:00 - 6:00 PM**

-----

### Location:

Online through Zoom

**Join us anywhere from  
your computer or phone**

Approved for 1 Social  
Work CE (\$10)

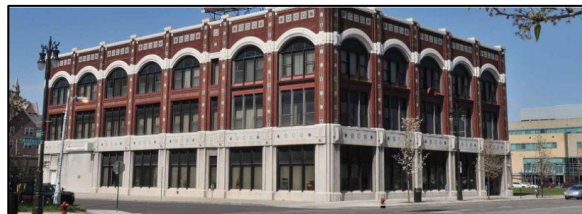
The Special Interest Forum series is a follow-up to the [Intelligent Lives](#) premiere at Wayne State University in October 2018. These 1-hour, webinar-style forums provide a deeper dive into topics touched upon in the film.

Please join MI-DDI on **January 17, 2019** for an online Special Interest Forum exploring the topics of *Inclusive Education and Inclusive Communities*. Inclusion in both the community and in educational settings improves the overall quality of life for children with and without disabilities. A guest panel featuring Dr. Jill England, Abby Loy, and LuAnn Loy will share their experiences and provide practical strategies for creating and sustaining inclusion in communities and educational systems.

**Register for this FREE webinar\*:**

[Click to register for the January 17 Session](#)

\*1 Social Work CE unit is available for this session for a separate fee (\$10)



[ddi.wayne.edu](http://ddi.wayne.edu)

### Questions?

Contact:

Michael Bray

[mikebray@wayne.edu](mailto:mikebray@wayne.edu)

or

313-577-4178

### Who we are...

The Michigan Developmental Disabilities Institute (MI-DDI) is the state of Michigan's University Center for Excellence in Developmental Disabilities (UCEDD) and part of a national network. MI-DDI is dedicated to the development of inclusive communities and quality of life for people with disabilities and their families through a culturally-sensitive, statewide program of interdisciplinary education, community support and services, and research and dissemination of information.